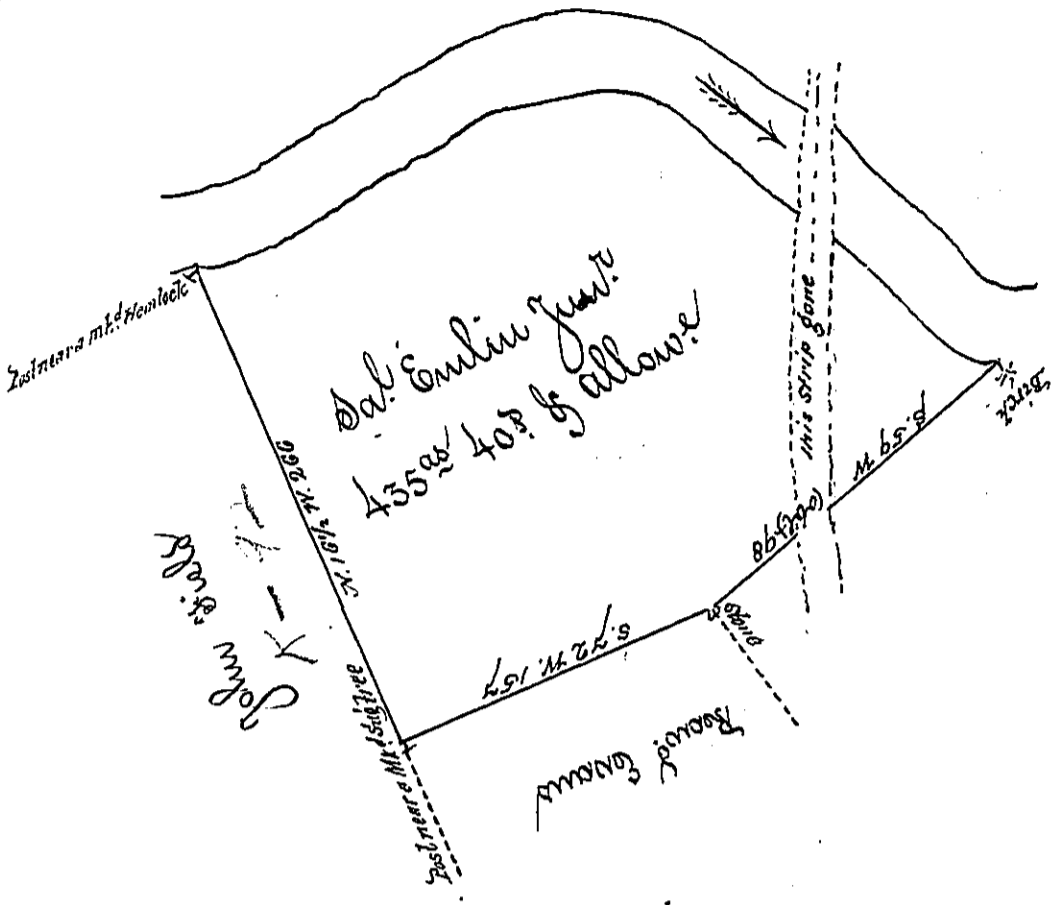


Courses down the River

S	84 1/2	E	19
N	79 1/2	E	23.5
N	67 1/2	E	27
N	74 1/2	E	65
N	65	E	25.5
N	72 1/4	E	24
N	88	E	34.9
S	85 1/2	E	27.6
S	62 1/4	E	13.9
S	40 20	E	26.4
S	45	E	72
S	35	E	27.5
S	31	E	31
S	38 1/2	E	21
S	57 10'	E	16.8
S	65 1/2	E	22.9



In Pursuance of a Warrant dated July 5th 1792 surveyed to Samuel Emelin Junr - Oct 24th 1792 the above described Tract of land, adjoining the river Delaware in the County of Northampton containing four hundred & thirty five acres & forty perches & allowance of 6 per.

Da. Broadhead Esq.
Surveyor Genl.

Ant. Crothers D.S.

IN TESTIMONY that the above is a copy of the original remaining on file in the Department of Internal Affairs of Pennsylvania, made conformably to an Act of Assembly approved the 16th day of February, 1833, I have hereunto set my Hand and caused the Seal of said Department to be affixed at Harrisburg, this seventh day of February 1901.

Jameow Pitta
Secretary of Internal Affairs.